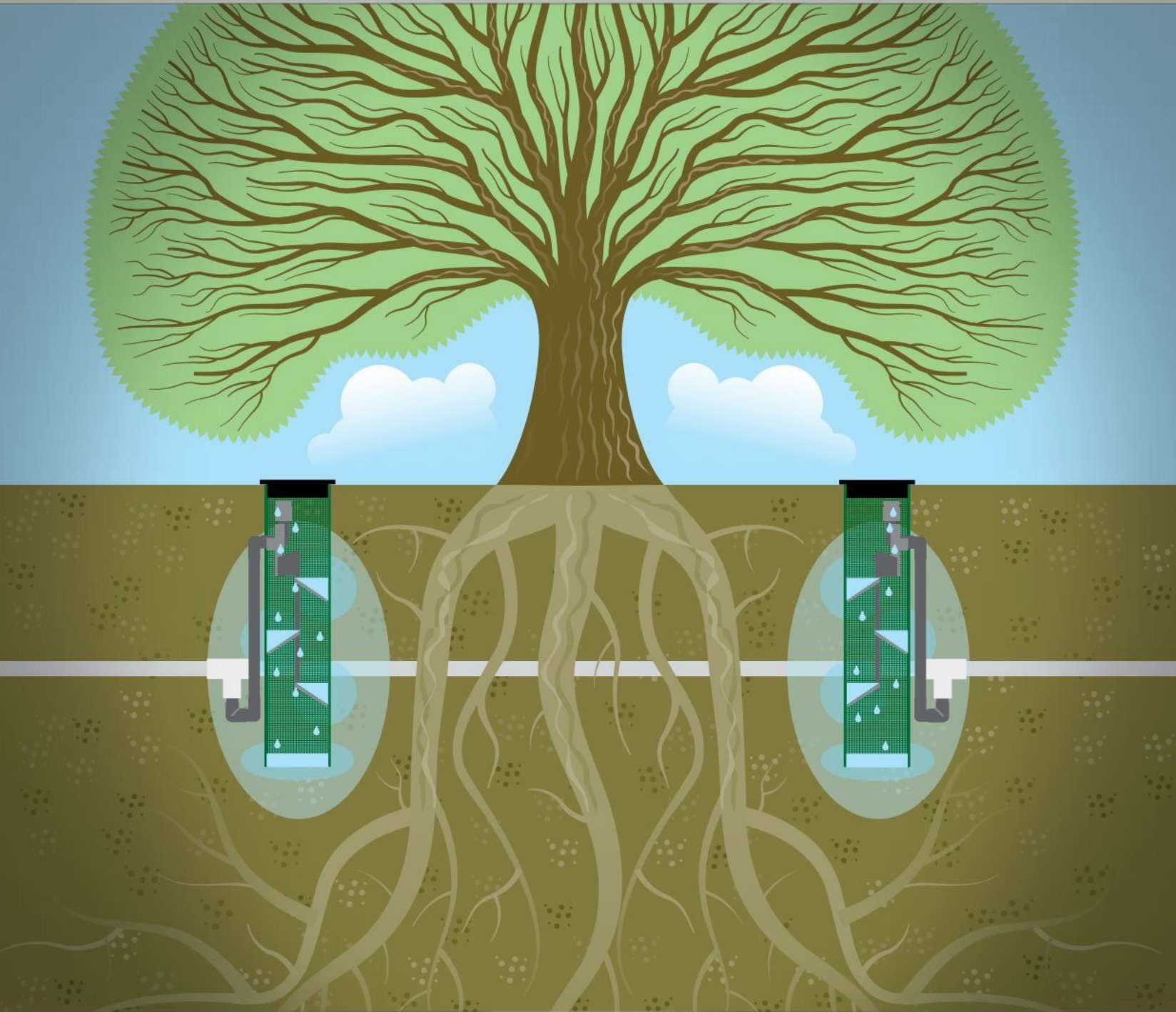


ROTORS SPRAYS VALVES CONTROLLERS SENSORS CENTRAL CONTROLS MICRO

# RZWS

## Root Zone Watering System

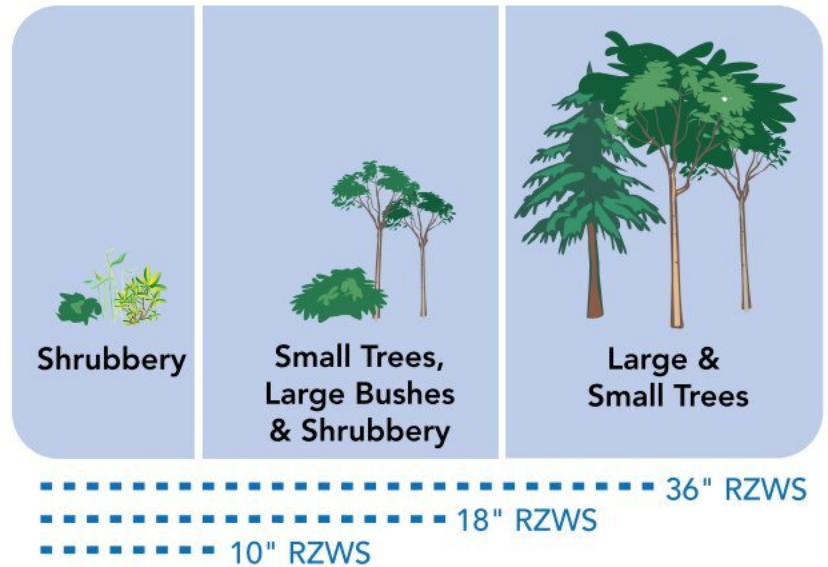
# Hunter®





# RZWS

## Root Zone Watering System



If you want young plants and trees to thrive, start 'em out right. Using both near-the-surface and deep root watering encourages roots to grow deep and stay safely below the surface. The equation is simple: water + oxygen + vital nutrients = healthy root systems. Developed to meet this challenge, the RZWS Root Zone Watering System features Hunter's patented StrataRoot design. It's a series of internal baffles that delivers water where it's needed most. Design also lends rigidity to the irrigation cylinder to facilitate installation. Comes pre-assembled to save time. Better still, the enclosed design and grate protect irrigation hardware from vandalism. To find the right solution, sometimes you just have to dig deep.



10" (0.25 m) RZWS



18" (0.46 m) RZWS



36" (0.9 m) RZWS



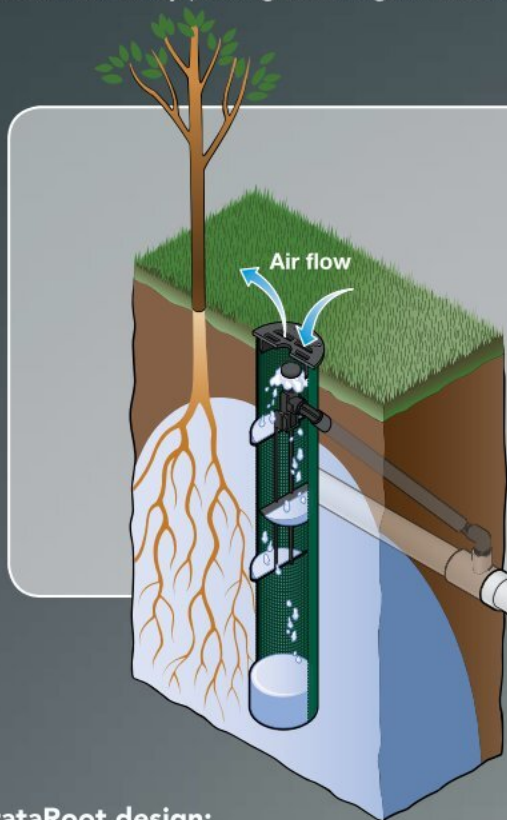
*In sandy soil conditions, the optional RZWS sleeve keeps the interior free from soil intrusion.*

# Hunter®



## STRATAROOT SYSTEM DELIVERS WATER TO ROOTS AT ALL SOIL DEPTHS

Eliminate wasteful run-off by putting water right where it's needed: in the ground, at the roots.



- Reliable Hunter Bubbler available with 0.25 GPM (0.946 l/min) or 0.50 GPM (1.89 l/min) flow.
- Rough plastic mesh allows water, air, and nutrients to bypass dense soil and directly reach root systems.
- StrataRoot delivers water to all levels of the tree or shrub's root system, near the surface and deep down.
- Rugged removable end cap allows easy serviceability of bubblers and check valves.

### Patented StrataRoot design:

Innovative internal baffle system distributes water near the surface and down deep to foster roots.

### Pre-assembled watering system:

Each unit is ready to go for fast installation.

### Premium pressure-compensating bubbler:

Two bubbler options: 0.25 GPM (0.946 l/min) or 0.50 GPM (1.89 l/min).

### Built-in swing joint on bubbler models:

Maximum flexibility and easy installation.

### Sturdy removable end cap:

Protects the RZWS yet allows bubbler and check valve to be serviced.

### Long-lasting pre-installed check valve option:

Valve prevents low-head drainage.

### Optional fabric filter sleeve:

Keeps sandy soil out of the irrigation well.

### Optional reclaimed end cap





# Charts and Specs

| SPECIFICATIONBUILDER   |                                  |                              |                                   |
|--|----------------------------------|------------------------------|-----------------------------------|
| MODEL  | LENGTH                           | BUBBLER FLOW RATE            | OPTIONS                           |
| <b>RZWS</b> = Root Zone Watering System  | 10 = 10"<br>18 = 18"<br>36 = 36" | 25 = .25 GPM<br>50 = .50 GPM | CV = Check Valve<br>R = Reclaimed |
| <b>RZWS-SLEEVE</b><br>Field installed sleeve made from landscape filter fabric |                                  |                              |                                   |
| <b>RZWS-CAP</b><br>Replacement cap for all RZWS models                         |                                  |                              |                                   |
| ▶ <b>RZWS</b>  | ▶ <b>18</b>                      | ▶ <b>25</b>                  | ▶ <b>CV</b>                       |
| EXAMPLE ▶ <b>RZWS - 18 - 25 - CV</b>   |                                  |                              |                                   |